

A101, A102 T1/E1 AFT card

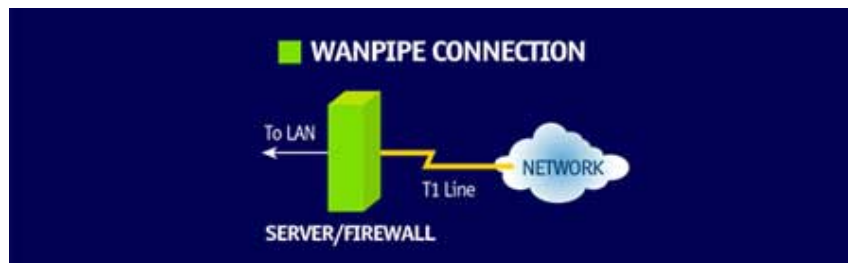
The A101/A102 is Sangoma's next generation hardware designed for optimum support of data and voice over T1 and E1.



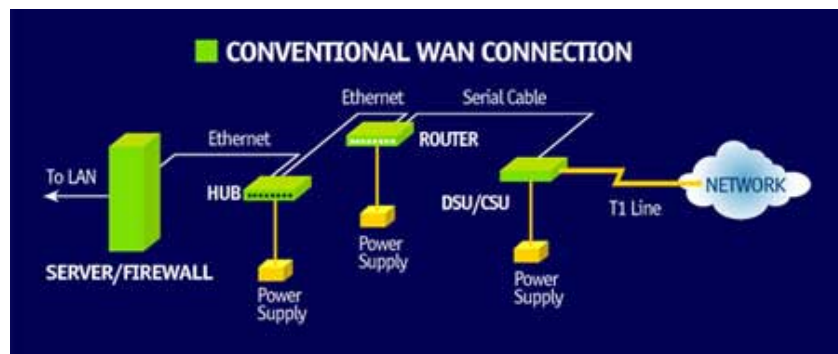
Operational modes

Data only:

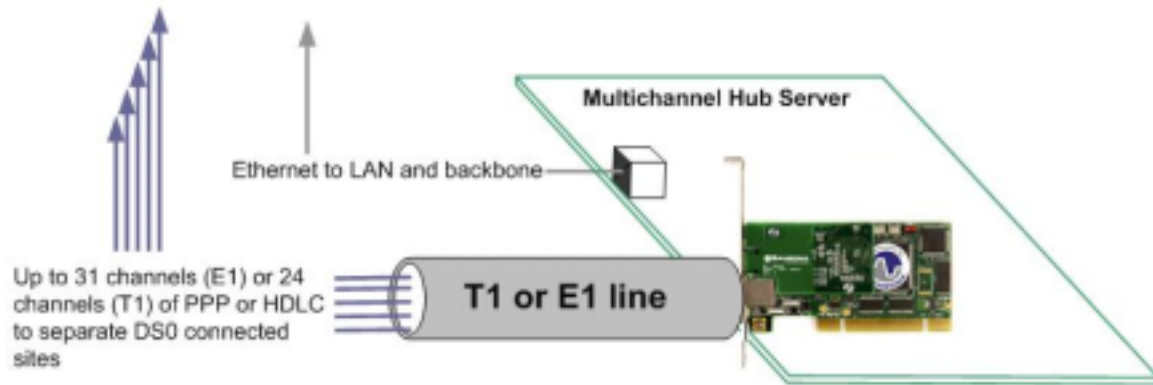
- T1/E1 and fractional T1/E1, single channel HDLC per line.



To Replace



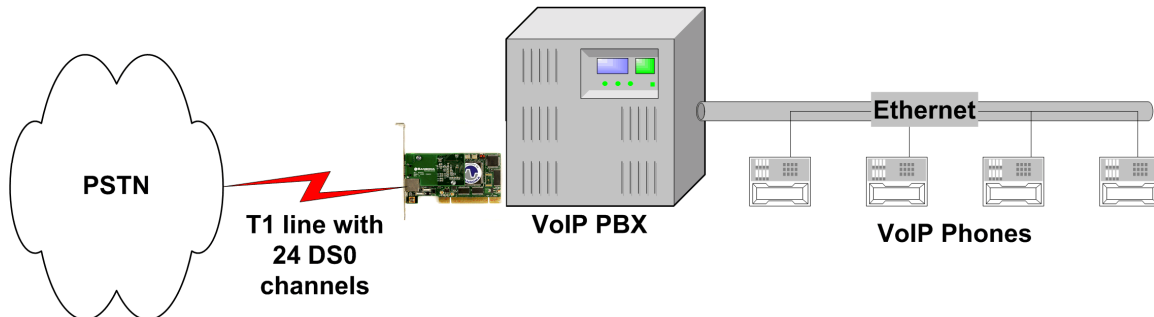
- Can be used as a hub for sub-DS1 remotes. The A101c and A102c can support any configuration of up to 62 DS0s carrying Frame Relay, PPP or HDLC data.



- Raw bitstream interfaces can be used to support arbitrary non standard line protocols such as non-byte aligned monosynch or bisynch.

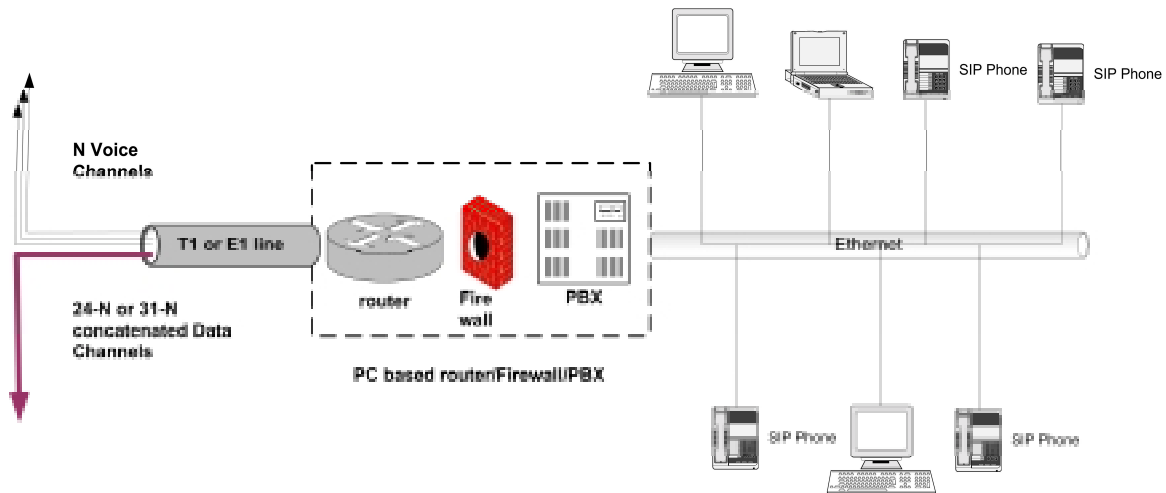
Voice modes:

- Supports Robbed Bit Channel Associated Signaling (CAS) and ISDN PRI.
- Block mode raw bit-stream interface for integration with the Asterisk Open Source PBX/IVR platform.
- Channelized mode supporting individual DMA into voice timeslots plus on-board HDLC support of PRI channel for soft PBX implementations that can use these features.



Mixed Voice/Data mode:

- Combination of router/PBX functions in one server.
- Both 8 bit (64kbps per channel) and 7 bit (56kbps per channel) board-level HDLC support.
- WAN data connection is supported by Sangoma's standard WANPIPE[®] routing stack providing certified Frame Relay, PPP, HDLC and X.25.



Technical Specifications

- Available as **Single** T1/E1 port (A101) or **Dual** T1/E1 port (A102) with daughterboard (as shown in photograph).
- Dimensions: 2U Form factor: 120mm x 55 mm for use in restricted chassis.
- 32 bit bus master DMA data exchanges across PCI interface at 132Mbytes/sec for minimum host processor intervention.
- Intelligent hardware: Downloadable Field Programmable Gate Array programming with multiple operating modes.
- Power: 800mA peak, operational 300mA max at +3.3v or 5v.
- MTBF: > 1 Million hours.
- Autosense compatibility with 5v and 3.3v PCI busses.
- Temperature range: 0 – 50C.
- Line decoding: HDB3, AMI, B8ZS.
- Framing: CRC4, non-CRC4, ESF, D4T1/E1.
- Clocking mode: Normal, Master.

RJ 45 Pin-out

RJ45 E1/T1 pinouts	
Pin	Signal
1	RTIP
2	RRING
4	TTIP
5	TRING

Operating systems

Windows 2000, Windows 2003, Windows XP, Linux (all versions, releases and distributions from 1.0 up), FreeBSD, Open BSD, NetBSD.

T1/E1 Status alarms

- ALOSV: Loss of Signal alarm
- LOS: Receive Loss of Signal
- ALTLOS: Alternate loss of Signal Status
- OOF: Out of Frame
- RED: Telco Red Alarm condition

Line protocols

Voice CAS and PRI, ATM, Frame Relay, X.25, HDLC, PPP, SS7, Transparent bit-stream, BSC.

Higher level protocols

Asterisk Open PBX/IVR, IP/IPX over Frame Relay/ PPP/ HDLC/ X.25, X.25 over Frame Relay (Annex G), BSC over X.25 (DMT and TCOP), SNA over X.25, PPPoE, PPPoA, IP over ATM.

Warranty

Three years parts and labour.

- AIS: Alarm Indication Signal
- OOSMFV: Loss of Signaling Multiframe
- OOCMFV: Loss of CRC Multiframe
- OOOFFV: Out of Off-Line Frame
- RAIV: Receive Loss of Signal
- YEL: Receive Telco Yellow Alarm

Certification

FCC Part 15 Class A, FCC Part 68, CE.

Diagnostic Tools

WANPIPEMON, SNMP, System logs.

Production quality

ISO 9002

Contact information

Tel: 905-474-1990 xt 114

FAX: 905-474-9223

sales@sangoma.com

<http://www.sangoma.com>